

地質学セミナー

日時: 1月 27日(水)
17時～

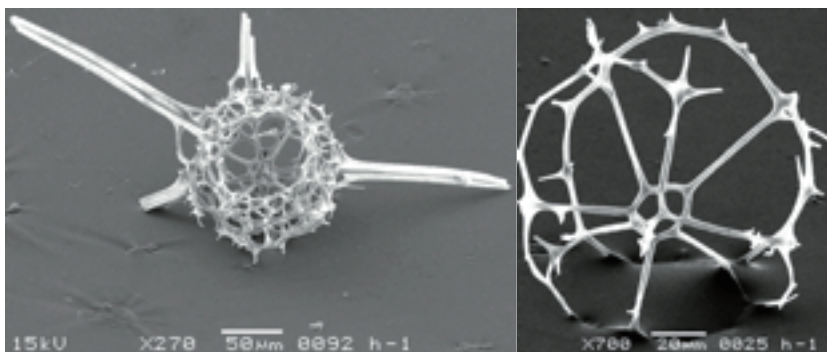
場所: 総合研究棟B棟 110 教室

Earliest Cretaceous Internal Spicule-Bearing Spherical Radiolarians from the Mariana Trench

発表者① 生物圏変遷科学分野2年 李瑞清 (Li Ruiqing)

Tuffaceous claystone sample obtained from a seamount flank at the Mariana Trench oceanward slope by the Japanese submersible “*Shinkai 6500*” yielded very well preserved earliest Cretaceous radiolarians. Internal spicule-bearing spherical radiolarians attributable to the families Centrocubidae and Entactiniidae have been identified from this radiolarian fauna. We investigated the internal spicule network and set up one new genus *Marianasphaera* belonging to the family Centrocubidae and one new genus *Shinkaiera* to Entactiniidae.

Three new species: *Marianasphaera ogawai*, *M. multispinosa*, and *Shinkaiera fragilis* are described. These radiolarians provide important data to link the missing records between Triassic and Cenozoic internal spicule-bearing spherical radiolarians.



(座長; 清水公輔)

Fig. 1 SEM photos of one of the new species from a basal view (left) and the internal skeletal structure of them from an apical view (right) of Centrocubidae.

次回のお知らせ

日時: 2月3日(水) 17時～

発表者: 興野純講師(鉱物学分野)

座長: 山岡伸司(惑星資源科学 M1)

連絡先

福田 美保 (地圏変遷科学 D1)
mh_fukud@geol.tsukuba.ac.jp

上松 佐知子 (生命環境科学)
agematsu@geol.tsukuba.ac.jp